

FEATURES

EXTERIOR

- ThermaTru entry doors with satin etched glass, select elevations
- Clopay Value & Gallery doors with windows, per elevation
- California Room
- El Dorado stone per elevation
- Three architectural styles, per plan
- Eagle roof tile or CertainTeed Solaris solar reflective roof, shingles, per plan
- James Hardie siding, per elevation

INTERIOR

- Recessed Panel Beech cabinets with hidden hinges and door hardware
- Shaker style Masonite Logan interior doors and 5 1/4" baseboards
- Kwikset chrome interior door hardware
- 12" x 24" Dal Tile at entry, kitchen, master bath, secondary baths, powder, and laundry
- Mohawk Cooper Creek carpet at bonus room, great room and all bedrooms
- Surface mount lighting in all bedrooms
- Upper cabinets over washer and dryer at laundry room
- Designated home port area with one dual USB and 110 outlet
- 10' ceilings downstairs

CONTEMPORARY KITCHENS

- 30" stainless steel Frigidaire Gallery built-in oven
- 36" stainless steel Frigidaire Gallery cooktop with under cabinet hood vent
- 30" stainless steel Frigidaire Gallery built-in microwave
- 24" stainless steel Frigidaire Gallery dishwasher
- 2cm Granite with 6" backsplash and laminated flat polished edge - choice of three colors
- Spacious walk-in pantry
- Culinary island for preparation and dining
- AmeriSink dual bowl stainless steel sink with InSinkErator disposal

SOPHISTICATED MASTER SUITES

- Moen chrome widespread faucet and matching bath hardware
- Moen chrome plumbing fixtures
- European spa-like master shower with clear glass enclosure
- Piedrafina Fusion quartz solid surface surround and 2" x 2" tile shower pan
- Pre-wired for ceiling fan
- Dual vanities with Piedrafina Fusion, 1 1/4" flat polished edge countertops and 6" backsplash
- Elegant freestanding soaker tub
- Medicine cabinet

SECONDARY BATHROOMS

- Piedrafina Fusion, 1 1/4" flat polished edge countertops and 4" backsplash
- Dual vanity sinks at select secondary bath, per plan
- Moen chrome plumbing fixtures and matching bath hardware
- Medicine cabinet at select secondary bath, per plan

GREEN LIVING

- GREENGUARD certified Vikrell tub/shower combination or shower stall at secondary baths
- Rinnai Tankless Water Heater
- 16 seer, 96% efficiency furnace
- Solar cooling optimized low-E & Argon dual pane Ply Gem windows
- Third party efficiency inspections
- LED lighting for greater energy efficiency
- Drought tolerant front yard landscaping with Subsurface drip system
- Kelly-Moore low VOC interior paint
- Astromical switch on exterior light fixtures

RESIDENCE TWO

4 - 7 BEDROOMS
 3.5 - 6 BATHS
 3,289 - 4,065 SQ.FT.



CALI RANCH



FARM HOUSE



SPANISH

REFLECTIONS
 AT RIVER ISLANDS

The developer reserves the right to make changes and modifications to the information contained herein. Availability, floor plans, measurements, specifications, features and building designs are subject to change without notice. Please contact a developer sales professional for details. E.&O.E



RESIDENCE THREE

5 BEDROOMS

4.5 BATHS

3,790 - 4,062 SQ.FT.



CRAFTSMAN



CALI RANCH



SPANISH

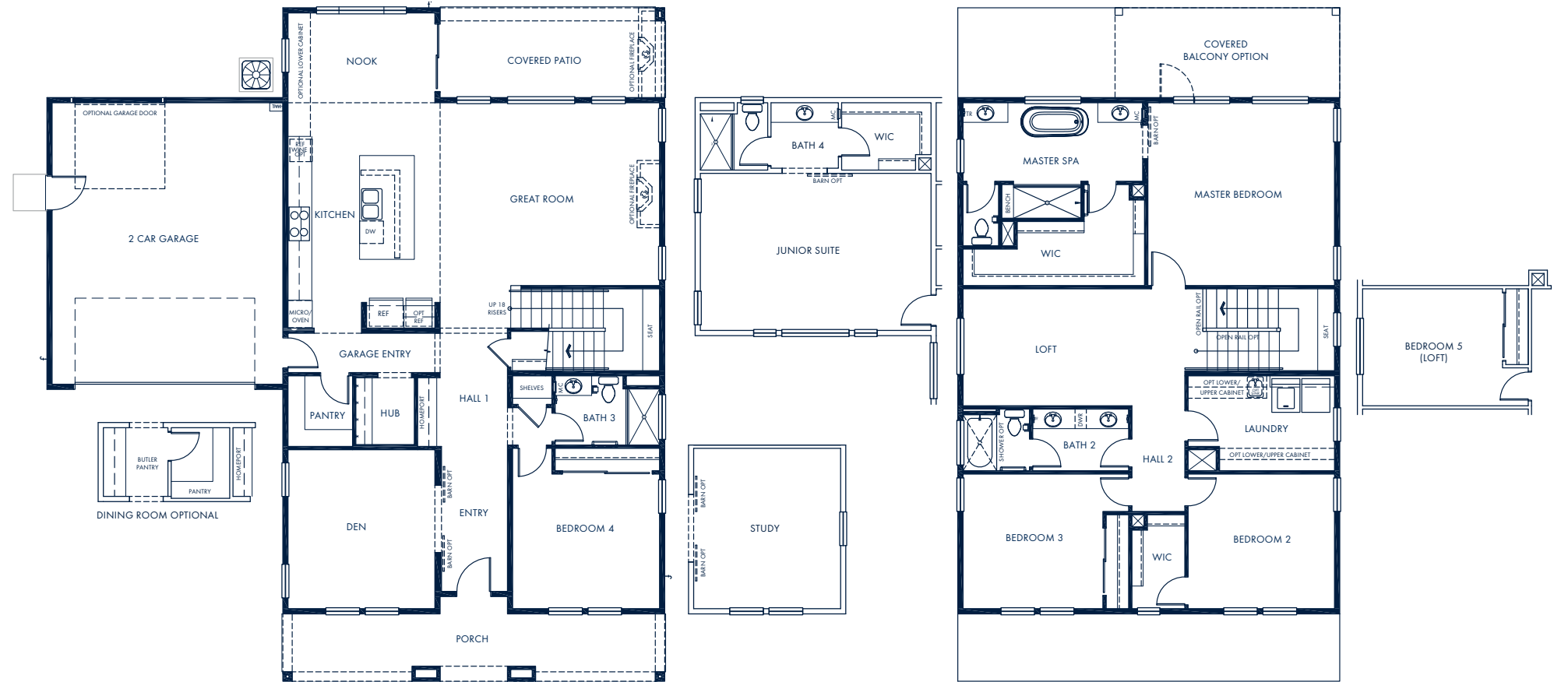
REFLECTIONS
AT RIVER ISLANDS

The developer reserves the right to make changes and modifications to the information contained herein. Availability, floor plans, measurements, specifications, features and building designs are subject to change without notice. Please contact a developer sales professional for details. E.&O.E



RESIDENCE ONE

4 - 5 BEDROOMS
3 BATHS
3,132 - 3,589 SQ.FT.



CRAFTSMAN



FARM HOUSE



SPANISH

REFLECTIONS
AT RIVER ISLANDS

The developer reserves the right to make changes and modifications to the information contained herein. Availability, floor plans, measurements, specifications, features and building designs are subject to change without notice. Please contact a developer sales professional for details. E.&O.E

